

# Information and tips regarding the snowfall risk destined to drivers of heavy vehicles



## Introduction

Catalonia is not a territory affected by big snowfalls, but when it snows in an extraordinary way or it snows in places where it is not usual, severe interferences are produced in the functioning of basic services and in the mobility. The most severe problems derive from the impact on traffic in the road network: accidents of heavy vehicles that block the lanes, impossibility to use the snowploughs because of the collapse of the roads or due to accidents.

Catalonia has a **Special plan of emergencies for snowfalls in Catalonia (Neucat)** to face all those emergencies related to snowfalls that occur in its territorial area. The plan Neucat will be activated as **alert or emergency** depending on the risk of snowfall or on the gravity of the affectation. When the Neucat is activated, the director of the plan may adopt specific measures to avoid mobility problems on the road network, as e.g.:

- Prohibiting the circulation of heavy vehicles on certain roads
- Opening up of parking lots
- Prohibiting to overtake

In the following, we give some recommendations destined to drivers of heavy vehicles in case of big snowfalls, with the aim of avoiding a collapse on the road network and in order to improve mobility.



## Information

Through the following means information about the road network and its affectation will be issued:

- Web of the Catalan Traffic Service
  - Road incidences: [cit.transit.gencat.cat/cit/AppJava/views/incidents.xhtml](http://cit.transit.gencat.cat/cit/AppJava/views/incidents.xhtml)
  - Dynamic traffic map: [mct.gencat.cat](http://mct.gencat.cat)
  - App: [transit.gencat.cat/ca/informacio\\_viaria/estat\\_del\\_transit/app\\_transit\\_mobil/](http://transit.gencat.cat/ca/informacio_viaria/estat_del_transit/app_transit_mobil/)
- Mobile portal of civil protection: [gencat.cat/ca/directoris/directori-daplicacions-mobils/aplicacio-gencat/](http://gencat.cat/ca/directoris/directori-daplicacions-mobils/aplicacio-gencat/)
- Others: information panels of the road network, information points, media



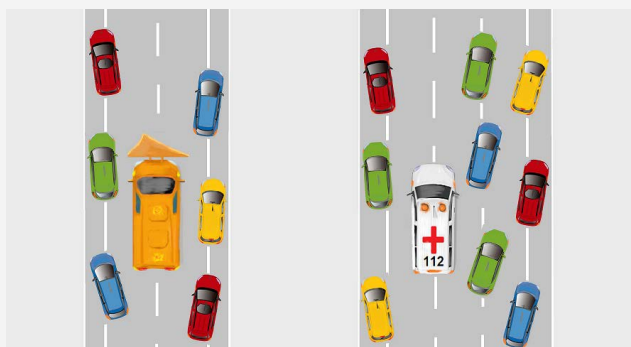
# Tips regarding the snowfall risk

## In the case of the forecast of a snowstorm, prepare yourself

- Inform yourself about the weather situation and about the road conditions, and follow the tips of the Catalan Traffic Service: consult the road conditions and the affectation, search safe routes not affected by the snowfall, and adapt your route to the weather forecast.
- Equip yourself suitably and pay attention to the vehicle condition: chains, antifreeze, full fuel tank, charged mobile telephone, blanket and flashlight.

## If the snowstorm surprises you, drive with caution

- Drive at moderate speed.
- If there is snow on the road, stop the vehicle in a place where you do not interrupt the circulation and put the chains onto the traction wheels.
- Leave one lane free in order to allow the snowploughs and the emergency services to pass.
- Switch on the dipped headlights and the fog lights.
- Maintain considerable distance with the other vehicles and do not overtake them.
- Do not overtake the snowploughs.
- If it starts to snow, drive with a lot of softness and slowness and, if it is necessary, change down the gears.
- If the wheels skid, slow down avoiding braking. If it is necessary, brake softly and pump the brakes gently.
- Be careful in shady places, bridges and viaducts because they can be icy. If there is ice, do not brake.



### For more information, consult:

Civil protection tips regarding snowfall: [interior.gencat.cat/nevades](http://interior.gencat.cat/nevades)

Weather forecast (Catalan Weather Service): [meteo.cat](http://meteo.cat)



@emergenciescat



emergenciescat

Remember, in an emergency situation, if you need help, call 112

